



MONTHLY MEMBERSHIP PROGRESS REPORT

District 16 N

Results as of: 05/31/2018

GMT: MAHESH CHITNIS

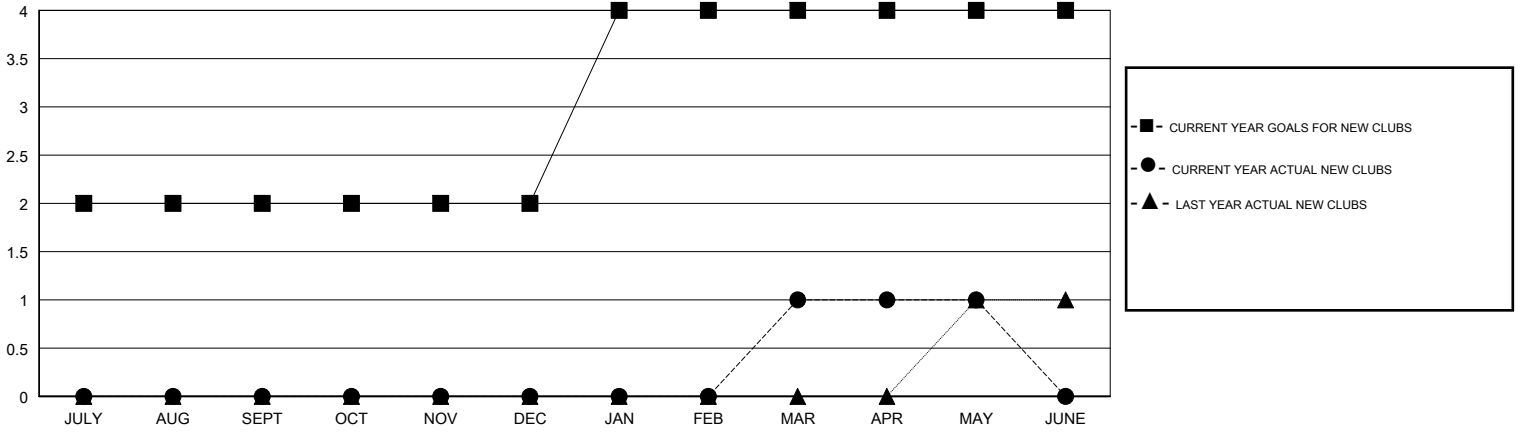
LOCATION NEW JERSEY

GMT CA

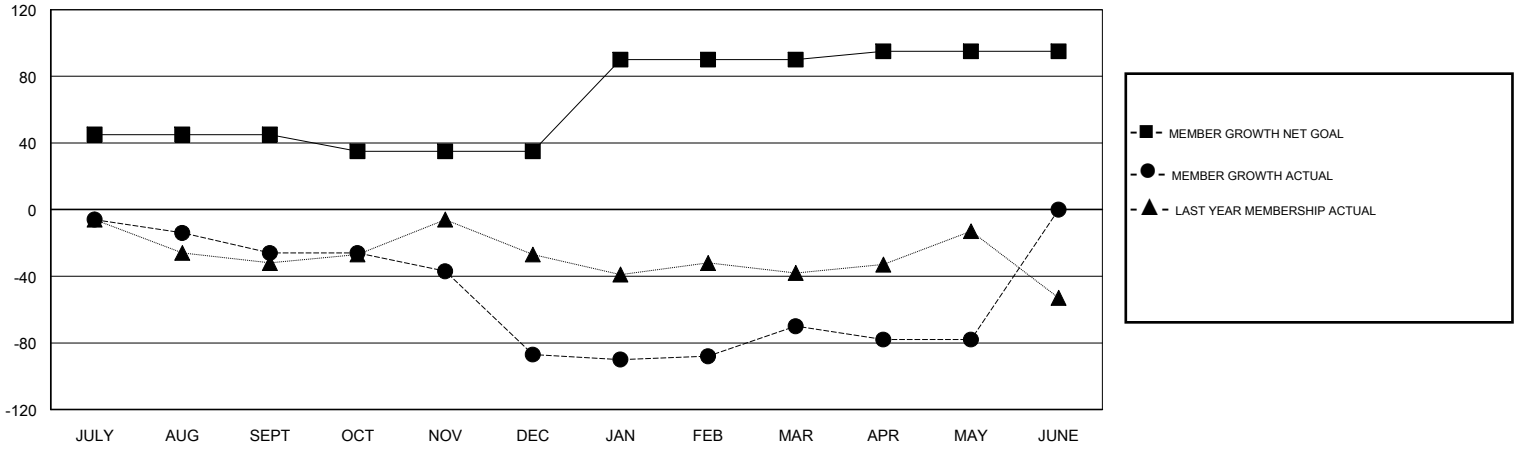
Clubs			
RESULTS FOR 2017-2018			
QUARTER	NEW CLUB GOAL	NEW CLUBS	DROPPED CLUBS
JULY/AUG/SEPT	2	0	0
OCT/NOV/DEC	0	0	3
JAN/FEB/MAR	2	1	0
APR/MAY/JUNE	0	0	0

Members			
RESULTS FOR 2017-2018			
QUARTER	MEMBER GROWTH NET GOAL	MEMBER GROWTH ACTUAL	DROPPED MEMBERS ACTUAL (including transfers)
JULY/AUG/SEPT	45	46	47
OCT/NOV/DEC	-10	24	84
JAN/FEB/MAR	55	48	29
APR/MAY/JUNE	5	18	23

GOALS AND ACTUAL NEW CLUBS CUMULATIVE



GOALS AND ACTUAL MEMBERS CUMULATIVE



DROPPED CLUBS: 3

32 CLUBS OF 63 ADDED 1 OR MORE NEW MEMBERS

GENDER DISTRIBUTION	
MALE	1,068 (72.90%)
FEMALE	397 (27.10%)
Women Percentage Fiscal Year Goal: 20%	

DROPPED MEMBERS	
DECEASED	20
CLUB CANCELLED	33
OTHER	130
TOTAL	183

[CLICK HERE FOR CUMULATIVE MEMBERSHIP DATA](#)

TOTAL FAMILY UNIT MEMBERS	222
FAMILY MEMBERS PAYING HALF DUES	115